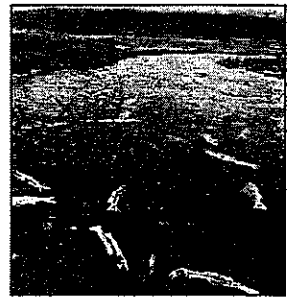
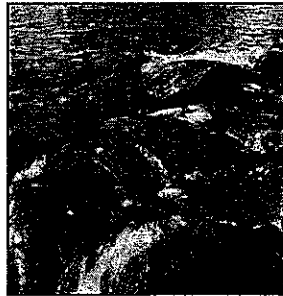




2010



ANNUAL ENFORCEMENT REPORT

Published June 2011

STATE WATER RESOURCES CONTROL BOARD
REGIONAL WATER QUALITY CONTROL BOARDS

Land Disposal Program Outputs

Facilities regulated under the Land Disposal program can be classified into three categories based on the waste type and the threat to water quality. Categories include: Landfills actively receiving waste (open), landfills that are closed and no longer accept waste (closed), and all other land disposal facilities (including surface impoundments, waste piles, land treatment units, etc).

Compliance Outputs

More than 2,000 SMRs are received annually by the Regional Water Boards to comply with the land disposal program requirements. Monitoring reports are submitted as specified in the permit requirements. For year 2010, the CIWQS database tracked monitoring reports due, received and reviewed. The following tables display the number of monitoring report due, received and reviewed in 2010 and the number of facilities with one or more SMR during the period. The data in CIWQS is still incomplete and only 57% of facilities have their reporting requirements included in the databases.

Table 56: Land Disposal Open Landfills, Self Monitoring Reports in 2010

Regional Board Office	Facilities Regulated	Facilities With SMR Due in 2010 (In CIWQS)	Self Monitoring Reports Due in 2010 (In CIWQS)	Reports Fully Submitted	Reports Reviewed	% Reports Fully Submitted
Region 1	1	1	6	2	-	33%
Region 2	12	6	15	2	2	13%
Region 3	13	6	20	6	6	30%
Region 4	11	8	25	24	23	96%
Region 5 Fresno	15	10	48	22	22	46%
Region 5 Redding	8	2	11	-	-	0%
Region 5 Sacramento	16	15	49	34	-	69%
Region 5	39	27	108	56	22	52%
Region 6 Tahoe	1	1	4	-	-	0%
Region 6 Victorville	16	17	63	42	18	67%
Region 6	17	18	67	42	18	63%
Region 7	17	3	9	-	-	0%
Region 8	9	2	10	-	-	0%
Region 9	6	-	-	-	-	ND
Total	125	71	260	132	71	51%

Table 57: Land Disposal Closed Landfills, Self Monitoring Reports in 2010

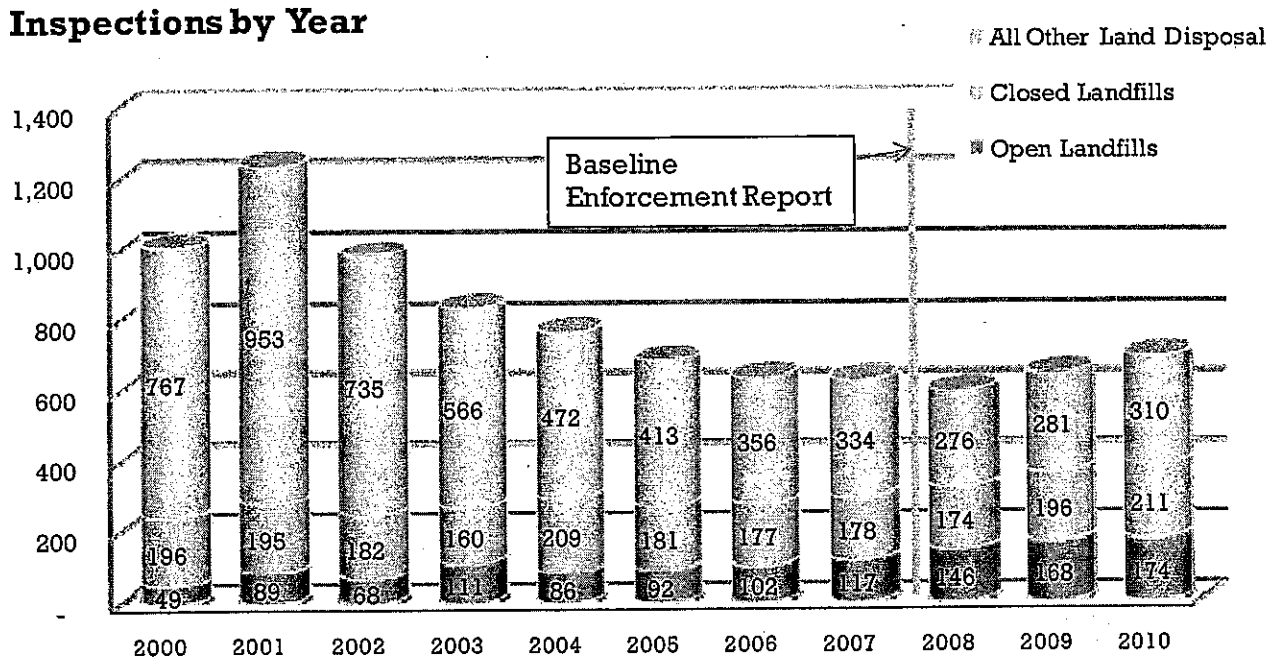
Regional Board Office	Facilities Regulated	Facilities With SMR Due in 2010 (In CIWQS)	Self Monitoring Reports Due in 2010 (In CIWQS)	Reports Fully Submitted	Reports Reviewed	% Reports Fully Submitted
Region 1	20	22	127	54	-	43%
Region 2	41	17	32	3	4	9%
Region 3	31	6	22	7	7	32%
Region 4	18	17	49	34	32	69%
Region 5 Fresno	36	22	100	44	42	44%
Region 5 Redding	17	9	30	-	-	0%
Region 5 Sacramento	44	39	96	64	-	67%
Region 5	97	70	226	108	42	48%
Region 6 Tahoe	10	9	25	8	1	32%
Region 6 Victorville	18	13	50	22	7	44%
Region 6	28	22	75	30	8	40%
Region 7	19	4	10	-	-	0%
Region 8	18	4	14	-	-	0%
Region 9	17	1	3	-	-	0%
Total	289	163	558	236	93	42%

Table 58: Land Disposal All Other Facilities, Self Monitoring Reports in 2010

Regional Board Office	Facilities Regulated	Facilities With SMR Due in 2010 (In CIWQS)	Self Monitoring Reports Due in 2010 (In CIWQS)	Reports Fully Submitted	Reports Reviewed	% Reports Fully Submitted
Region 1	14	4	31	4	-	13%
Region 2	33	10	24	2	2	8%
Region 3	14	3	7	2	2	29%
Region 4	30	28	104	66	59	63%
Region 5 Fresno	99	21	124	82	77	66%
Region 5 Redding	17	1	3	-	-	0%
Region 5 Sacramento	49	22	47	18	-	38%
Region 5	165	44	174	100	77	57%
Region 6 Tahoe	2	-	-	-	-	ND
Region 6 Victorville	50	35	136	109	59	80%
Region 6	52	35	136	109	59	80%
Region 7	37	11	28	-	-	0%
Region 8	34	7	35	-	-	0%
Region 9	28	1	3	-	-	0%
Total	407	143	542	283	199	52%

Figure 20 shows the trends in the number of inspections conducted since 2000. While the general trend is downward, the data show that inspection numbers have gradually increased since the FY 2007-2008 Baseline Enforcement Report.

Figure 20: Land Disposal Program, Inspections Trends 2000-2010



Inspections conducted are tracked in the CIWQS database. For the Land Disposal program, 471 facilities were inspected during 2010 (402 in 2009). Tables 59 to 61 below shows the total number of inspections conducted by each Regional Water Board in 2010.

Table 59: Land Disposal Open Landfills Inspections in 2010

LNDSP	INSPECTIONS	FACILITIES INSPECTED	FACILITIES REGULATED	% Facilities Inspected
Region 1	2	1	1	100%
Region 2	17	11	12	92%
Region 3	26	9	13	69%
Region 4	26	11	11	100%
<i>Region 5 Fresno</i>	30	16	15	107%
<i>Region 5 Redding</i>	13	6	8	75%
<i>Region 5 Sacramento</i>	11	7	16	44%
Region 5	54	29	39	74%
<i>Region 6 Tahoe</i>	1	1	1	100%
<i>Region 6 Victorville</i>	15	14	16	88%
Region 6	16	15	17	88%
Region 7	14	5	17	29%
Region 8	16	8	9	89%
Region 9	3	3	6	50%
Total	174	92	125	74%

Table 60: Land Disposal Closed Landfills Inspections in 2010

LNDSP	INSPECTIONS	FACILITIES INSPECTED	FACILITIES REGULATED	% Facilities Inspected
Region 1	4	4	20	20%
Region 2	20	14	41	34%
Region 3	22	15	31	48%
Region 4	23	18	18	100%
<i>Region 5 Fresno</i>	45	27	36	75%
<i>Region 5 Redding</i>	4	4	17	24%
<i>Region 5 Sacramento</i>	12	6	44	14%
Region 5	61	37	97	38%
<i>Region 6 Tahoe</i>	10	10	10	100%
<i>Region 6 Victorville</i>	17	16	18	89%
Region 6	27	26	28	93%
Region 7	15	7	19	37%
Region 8	28	18	18	100%
Region 9	11	10	17	59%
Total	211	149	289	52%

Table 61: Land Disposal All Other Facilities Inspections in 2010

LNDSP	INSPECTIONS	FACILITIES INSPECTED	FACILITIES REGULATED	% Facilities Inspected
Region 1	7	6	14	43%
Region 2	17	13	33	39%
Region 3	6	4	14	29%
Region 4	34	29	30	97%
<i>Region 5 Fresno</i>	69	66	99	67%
<i>Region 5 Redding</i>	12	8	17	47%
<i>Region 5 Sacramento</i>	14	14	49	29%
Region 5	95	88	165	53%
<i>Region 6 Tahoe</i>	1	1	2	50%
<i>Region 6 Victorville</i>	41	36	50	72%
Region 6	42	37	52	71%
Region 7	55	18	37	49%
Region 8	49	30	34	88%
Region 9	5	5	28	18%
Total	310	230	407	57%

* Data from CIWQS

Trends in the number of violations receiving and not receiving enforcement for the entire Land Disposal has fluctuated since 2000. The percentage of violations receiving enforcement fluctuated from 80% to 34% during this period.

Figure 21: Land Disposal, Violations Trends

Violations by Year

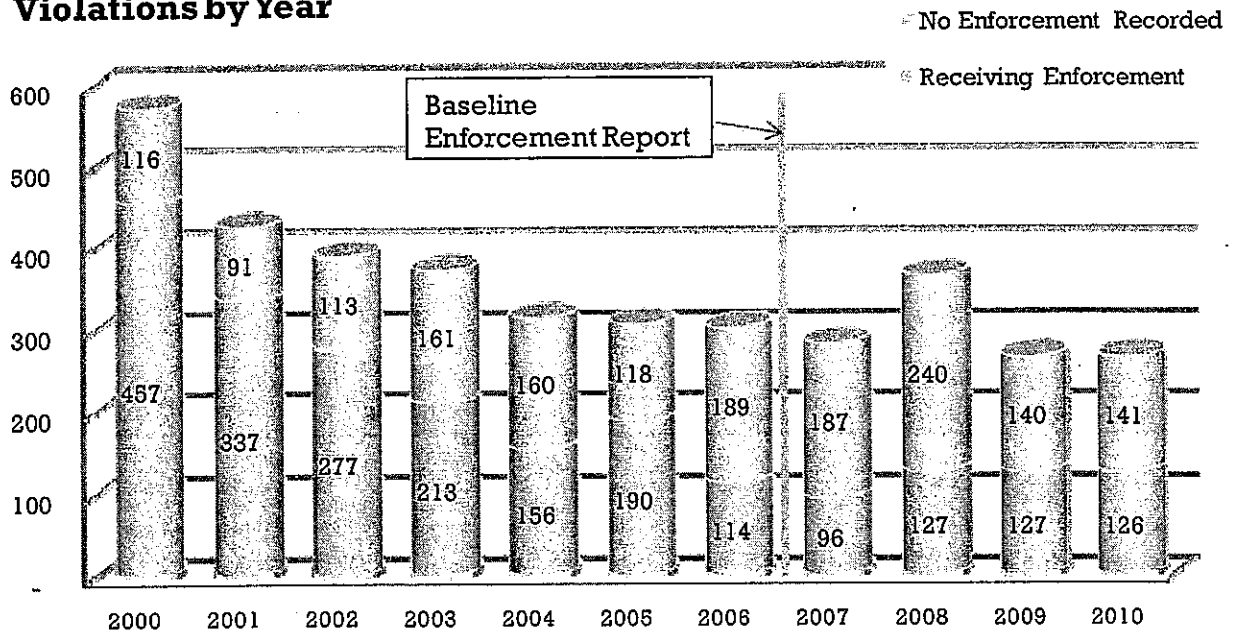


Table 62: Land Disposal, Open Landfills Compliance and Enforcement Outputs in 2010

LAND DISPOSAL	No. of Facilities	Violations		
		Total Violations	Receiving Enforcement	% of Violations Receiving Enforcement
Region 1	1	-	-	
Region 2	12	1	-	0%
Region 3	13	7	3	43%
Region 4	11	1	-	0%
Region 5 Fresno	15	1	1	100%
Region 5 Redding	8	1	1	100%
Region 5 Sacramento	16	22	16	73%
Region 5 Total	39	24	18	75%
Region 6 Tahoe	1	-	-	
Region 6 Victorville	16	36	9	25%
Region 6 Total	17	36	9	25%
Region 7	17	-	-	
Region 8	9	6	5	83%
Region 9	6	-	-	
Totals	125	75	35	47%

* Data from CIWQS

Table 63: Land Disposal, Closed Landfills, Compliance and Enforcement Outputs in 2010

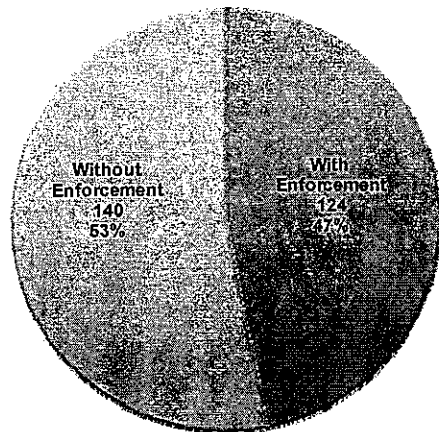
LAND DISPOSAL	No. of Facilities	Violations		
		Total Violations	Receiving Enforcement	% of Violations Receiving Enforcement
Region 1	20	-	-	
Region 2	41	-	-	
Region 3	31	-	-	
Region 4	18	-	-	
Region 5 Fresno	36	5	-	0%
Region 5 Redding	17	1	1	100%
Region 5 Sacramento	44	18	1	6%
Region 5 Total	97	24	2	8%
Region 6 Tahoe	10	-	-	
Region 6 Victorville	18	30	18	60%
Region 6 Total	28	30	18	60%
Region 7	19	-	-	
Region 8	18	7	-	0%
Region 9	17	5	5	100%
Totals	289	66	25	38%

Table 64: Land Disposal All Other Facilities, Compliance and Enforcement Outputs in 2010

LAND DISPOSAL	No. of Facilities	Violations		
		Total Violations	Receiving Enforcement	% of Violations Receiving Enforcement
Region 1	14	-	-	
Region 2	33	-	-	
Region 3	14	2	2	100%
Region 4	30	3	2	67%
Region 5 Fresno	99	14	11	79%
Region 5 Redding	17	2	2	100%
Region 5 Sacramento	49	29	20	69%
Region 5 Total	165	45	33	73%
Region 6 Tahoe	2	1	-	0%
Region 6 Victorville	50	61	21	34%
Region 6 Total	52	62	21	34%
Region 7	37	-	-	
Region 8	34	11	6	55%
Region 9	28	-	-	
Totals	407	123	64	52%

Figure 22: Land Disposal Enforcement Response

Violations Receiving Enforcement 2010



Land Disposal sites include landfills, surface impoundments, ponds, waste piles, and land treatment units. Sites regulated under the Land Disposal Program are generally stationary, long-term sites that require on-going monitoring to detect a release of waste that could impact groundwater.

Enforcement Action Outputs

The following table lists the number of enforcement actions taken by the Regional Water Boards ranked from informal to more formal, during 2010.

Table 65: Land Disposal Enforcement Actions for Year 2010

LAND DISPOSAL PROGRAM Enforcement Actions for Year 2010		Regional Board											Total	
Enforcement CATEGORY	Enforcement Action TYPE	1	2	3	4	5F	5R	5S	6A	6B	7	8		9
ALL OTHER ACTIONS	Staff Enforcement Letter	-	-	-	-	6	2	3	-	-	-	2	2	15
	Oral Communication	-	-	-	-	-	-	-	-	8	-	2	-	10
	Notice to Comply	-	-	-	-	-	-	-	-	-	-	8	-	8
	Notice of Violation	-	-	2	-	10	1	7	-	9	-	3	2	34
	13267 Letter	-	1	-	-	-	-	1	-	3	1	-	1	7
COMPLIANCE ACTIONS	Clean-up and Abatement Order	-	-	-	-	-	-	-	-	-	-	-	1	1
	Time Schedule Order	-	-	-	-	1	-	-	-	-	-	-	-	1
	Cease and Desist Order	-	-	-	-	-	-	1	-	-	-	-	-	1
PENALTY ACTIONS	Admin Civil Liability	-	-	-	-	-	-	-	-	-	-	-	1	1
TOTAL	TOTAL	-	1	2	-	17	3	12	-	20	1	15	7	78

Figure 23 shows trends in enforcement actions issued since 2000.

Figure 23: Land Disposal, Enforcement Actions Trends

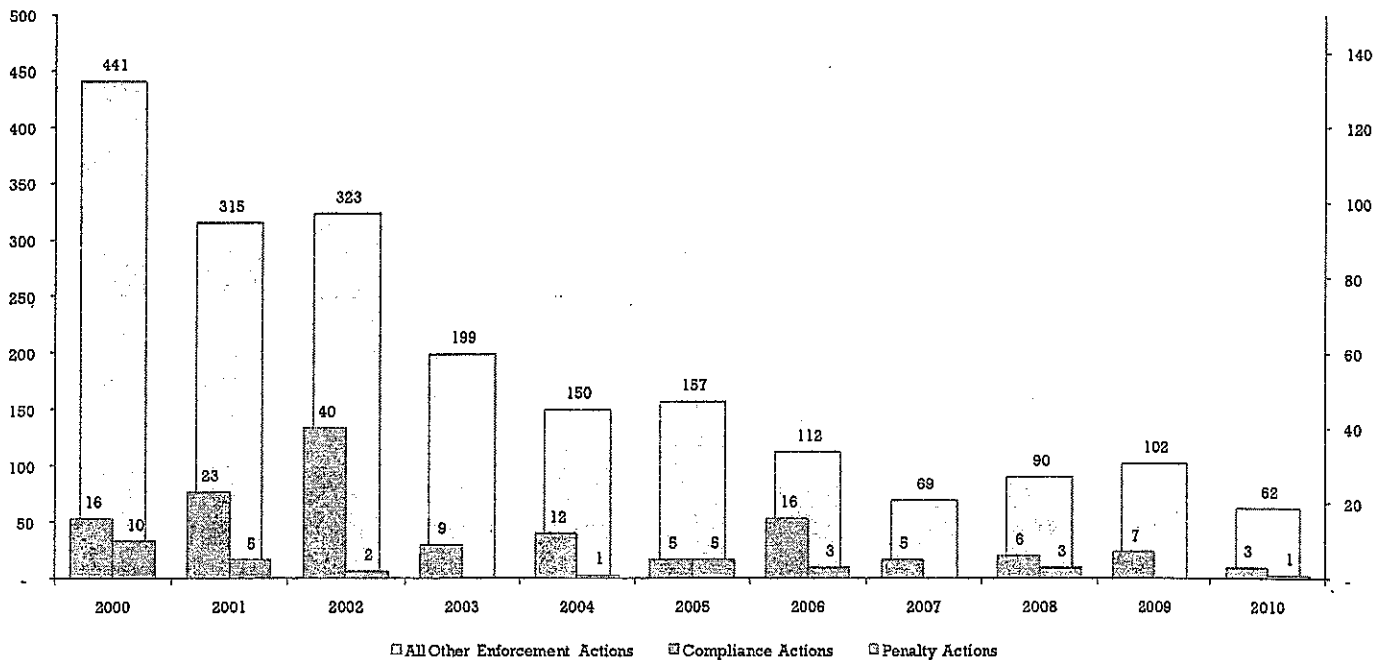


Figure 24: Land Disposal Program, Enforcement Response 2000-2010

Number of Violations Receiving the Highest Level of Enforcement by Year

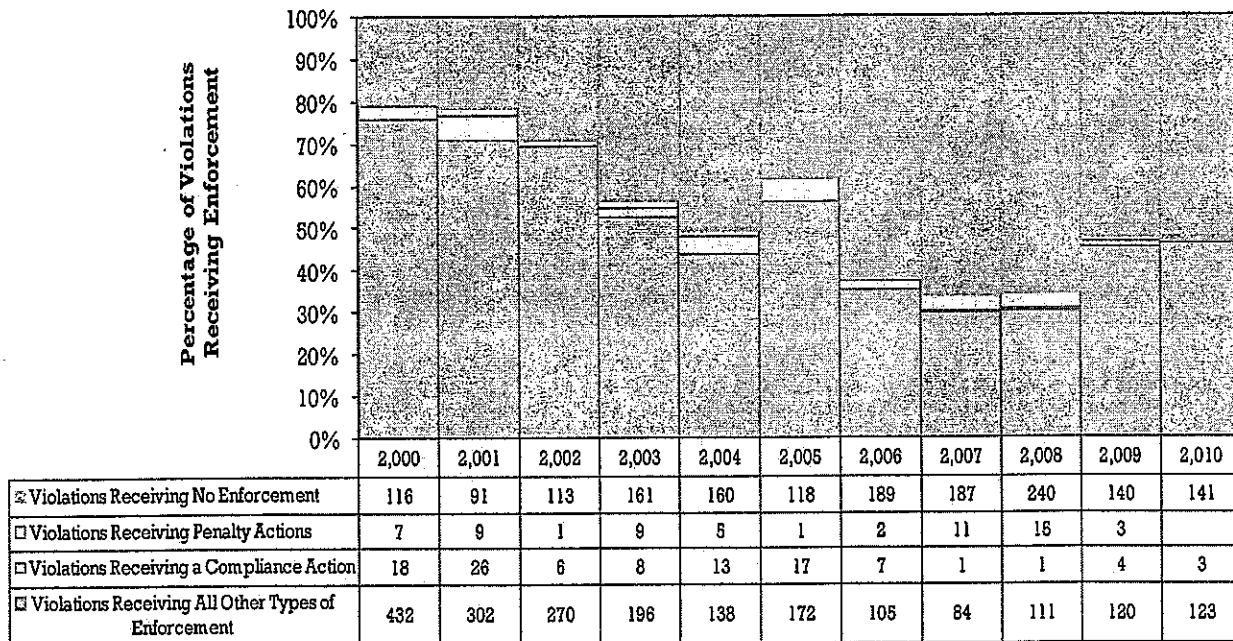


Figure 24 displays the percentage of violations addressed with an enforcement action that includes penalties, violations that received an enforcement action that requires compliance (under Article 1 of Chapter 5 of California Water Code), and those violations that only received an informal action or an action requiring further information (Under section 13267 of California Water Code). The data shows a downward trend of the number of violations that received any type of enforcement. The composition of the enforcement response is heavily weighted on all other type of enforcement.

LAND DISPOSAL PROGRAM

Compliance rates in this program vary significantly among Regional Water Boards. In 2010, 116 facilities under the land disposal program were identified as having one or more violations. This represents a noncompliance rate of 14%.

Similar to the NPDES Wastewater program, the compliance rate was calculated assuming that each facility received some level of oversight. The inspection rate for this program is very high at 57%. The lack of violation information in some regions may be due to inconsistencies in data entry.

Land Disposal Active Landfills

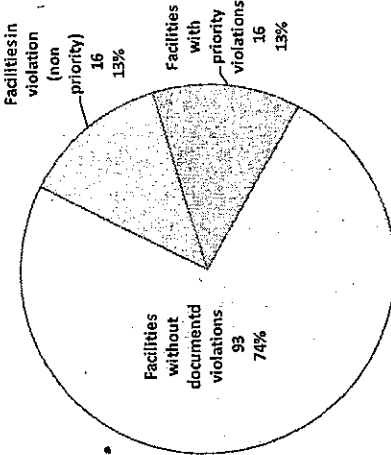
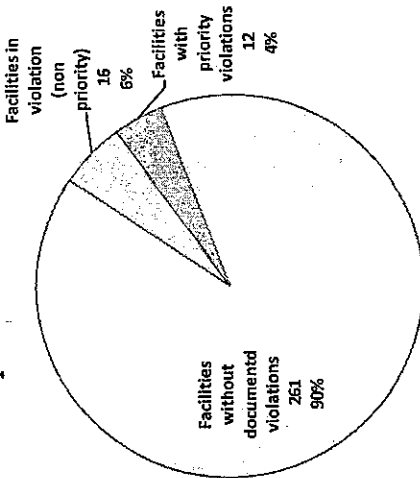


Table 84: Compliance Rates, Land Disposal Open-Active Landfills in 2010

Regional Board Office	Number of Facilities	Facilities with one or more violations in the period	Percentage of Facilities in Violation	Total Violations	Total Facilities With Priority Violations	Percentage of Facilities with priority violations	Total Priority Violations	# of Facilities with 1-10 violations	# of Facilities with 11-25 violations	# of Facilities with >25 violations	Average # of Violations per Facility In violation
1	1	0	0%	0	0	0%	0	0	0	0	1.0
2	12	1	8%	1	1	8%	1	1	0	0	1.0
3	13	3	23%	7	3	23%	7	3	0	0	2.3
4	11	1	9%	1	1	9%	1	1	0	0	1.0
5F	15	1	7%	1	0	0%	0	1	0	0	1.0
5R	8	1	13%	1	1	13%	1	1	0	0	1.0
5S	16	8	50%	22	0	0%	0	8	0	0	2.8
5 Total	39	10	26%	24	1	3%	1	10	0	0	2.4
6A	1	0	0%	0	0	0%	0	0	0	0	0.0
6B	16	12	75%	36	8	50%	12	12	0	0	3.0
6 Total	17	12	71%	36	8	47%	12	12	0	0	3.0
7	17	0	0%	0	0	0%	0	0	0	0	0.0
8	9	5	56%	6	2	22%	2	5	0	0	1.2
9	6	0	0%	0	0	0%	0	0	0	0	0.0
Total	125	32	26%	75	16	13%	24	32	0	0	2.3

Land Disposal Closed Landfills



Once a Landfill is no longer accepting waste the Water Boards continue inspecting and regulating the facility to ensure compliance with waste discharge requirements.

The non-compliance rate for closed landfills at 10% is better than open-active landfills at 26% although this information varies by Regional Water Board

Table 85: Compliance Rates, Land Disposal Closed Landfills in 2010

Regional Board Office	Number of Facilities	Facilities with one or more violations in the period		Total Violations		Total Facilities With Priority Violations	Percentage of Facilities with priority violations	Total Priority Violations	# of Facilities with 1-10 violations	# of Facilities with 11-25 violations	# of Facilities with >25 violations	Average # of Violations per Facility in Violation
		Facilities in Violation	Percentage of Facilities in Violation	Total Violations	Percentage of Facilities with priority violations							
1	20	0	0%	-	-	-	0%	-	-	-	-	-
2	41	0	0%	-	-	-	0%	-	-	-	-	-
3	31	0	0%	-	-	-	0%	-	-	-	-	-
4	18	0	0%	-	-	-	0%	-	-	-	-	-
5F	36	3	8%	5	-	-	0%	-	3	-	-	1.7
5R	17	1	6%	1	-	-	0%	-	1	-	-	1.0
5S	44	4	9%	18	-	-	0%	-	4	-	-	4.5
5 Total	97	8	8%	24	-	-	0%	-	8	-	-	3.0
6A	10	0	0%	-	-	-	0%	-	-	-	-	-
6B	18	12	67%	30	10	13	56%	13	12	-	-	2.5
6 Total	28	12	43%	30	10	13	36%	13	12	-	-	2.5
7	19	0	0%	-	-	-	0%	-	-	-	-	-
8	18	5	28%	7	1	1	6%	1	5	-	-	1.4
9	17	3	18%	5	1	1	6%	1	3	-	-	1.7
Total	289	28	10%	66	12	15	4%	15	28	-	-	2.4

Land Disposal All Other

The Land Disposal program regulates waste discharge to land for treatment, storage and disposal in waste management units. Waste management units include waste piles, surface impoundments, and landfills. All other land disposal facilities include surface impoundments, waste piles, land treatment units, etc.

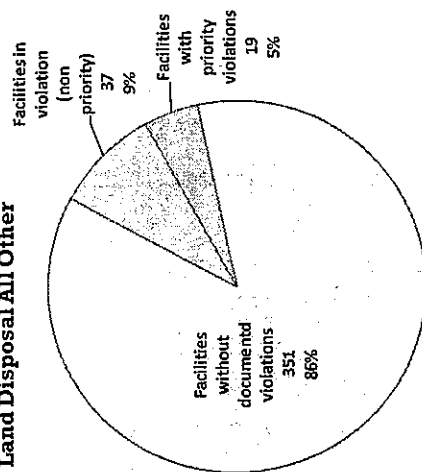
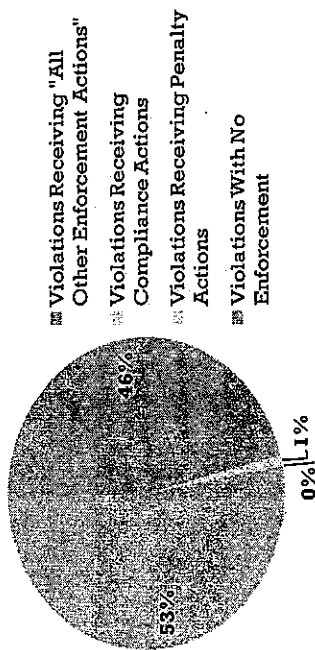


Table 86: Compliance Rates, All Other Facilities Land Disposal in 2010

Regional Board Office	Number of Facilities	Facilities with one or more violations in the period		Total Facilities With Priority Violations		Percentage of Facilities with priority violations	Total Priority Violations	# of Facilities with 1-10 violations	# of Facilities with 11-25 violations	# of Facilities with >25 violations	Average # of Violations per Facility in violation
		Facilities with one or more violations in the period	Percentage of Facilities in Violation	Total Violations	Percentage of Facilities with priority violations						
1	14	-	0%	-	-	0%	-	-	-	-	-
2	33	-	0%	-	-	0%	-	-	-	-	-
3	14	1	7%	2	1	7%	2	1	-	-	2.0
4	30	2	7%	3	1	3%	1	2	-	-	1.5
5F	99	10	10%	14	-	0%	-	10	-	-	1.4
5R	17	2	12%	2	2	12%	2	2	-	-	1.0
5S	49	8	16%	29	-	0%	-	7	1	-	3.6
5 Total	165	20	12%	45	2	1%	2	19	1	-	2.3
6A	2	1	50%	1	-	0%	-	1	-	-	1.0
6B	50	27	54%	61	15	30%	32	27	-	-	2.3
6 Total	52	28	54%	62	15	29%	32	28	-	-	2.2
7	37	-	0%	-	-	0%	-	-	-	-	-
8	34	5	15%	11	-	0%	-	5	-	-	2.2
9	28	-	0%	-	-	0%	-	-	-	-	-
Total	407	56	14%	123	19	5%	37	55	1	-	2.2

LAND DISPOSAL: ENFORCEMENT RESPONSE. ALL VIOLATIONS

Highest Enforcement Response to Violations



Violations With and Without Enforcement Actions

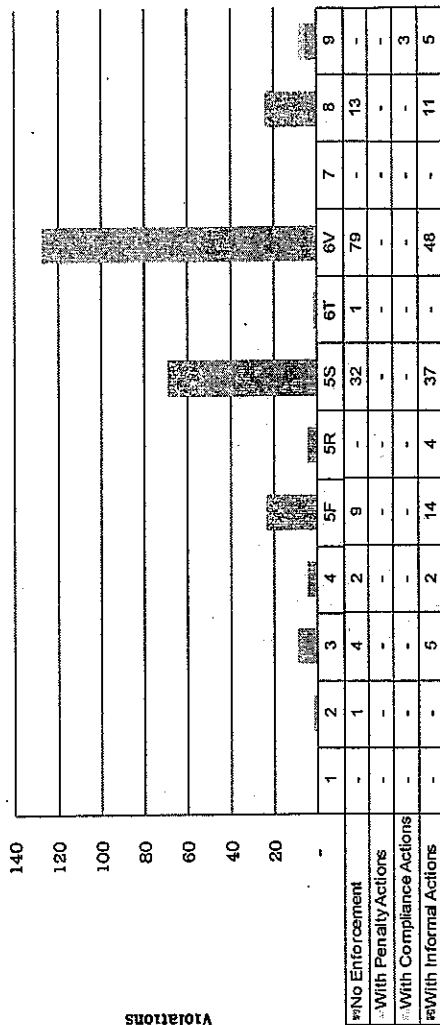


Table 87: Enforcement Response to 2010 LAND DISPOSAL VIOLATIONS

REGIONAL BOARD OFFICE	Violations Receiving "All Other Enforcement Actions"	Violations Receiving Compliance Actions	Violations Receiving Penalty Actions	Violations With Enforcement	Violations With No Enforcement	Total Number of Violations
Region 1	-	-	-	-	-	-
Region 2	-	0%	-	0%	1	1
Region 3	5	56%	-	5	4	9
Region 4	2	50%	-	2	2	4
Region 5 Fresno	14	61%	-	14	9	23
Region 5 Redding	4	100%	-	4	-	4
Region 5 Sacramento	37	54%	-	37	32	69
Region 5 Total	55	57%	-	55	41	96
Region 6 Tahoe	-	0%	-	-	1	1
Region 6 Victorville	48	38%	-	48	79	127
Region 6 Total	48	38%	-	48	80	128
Region 7	-	N/A	-	-	-	-
Region 8	11	46%	-	11	13	24
Region 9	5	100%	3	5	-	5
TOTAL	126	47%	3	126	141	267